

# Endoscopic Submucosal Dissection/Endorobotics Symposium

November 11–12, 2024

Cleveland Clinic Main Campus | Cleveland, Ohio



Register today at [ccfcme.org/ESDE2024](https://ccfcme.org/ESDE2024)

Don't miss this activity. Limited slots available!

## Course Description/Overview

The Endoluminal Conference is a non-CME course created to introduce its participants to new organ sparing techniques in Endoscopic Dissection and Endoscopic Resection of the Upper and Lower GI tract in Endoluminal Surgery. This course includes 8 hours hands-on lab. The hands-on course will cover tissue resection and closure techniques specific to Endoscopic Dissection and Endoscopic Resection. We will also discuss pre-evaluation of patient records, follow-up care, pathological assessment, and proper billing in the course.

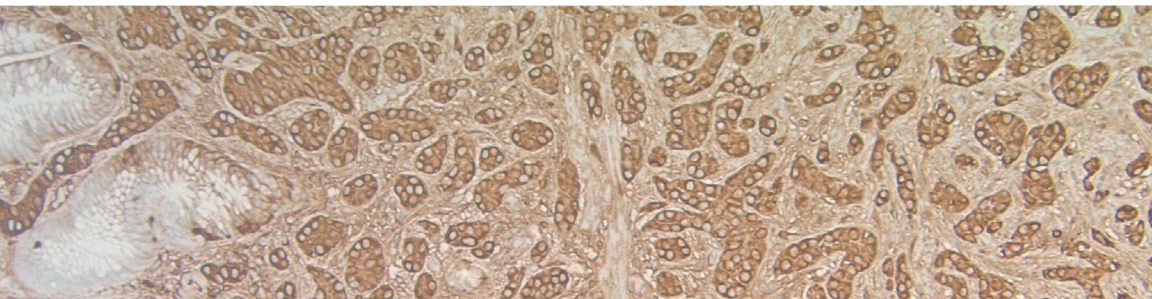
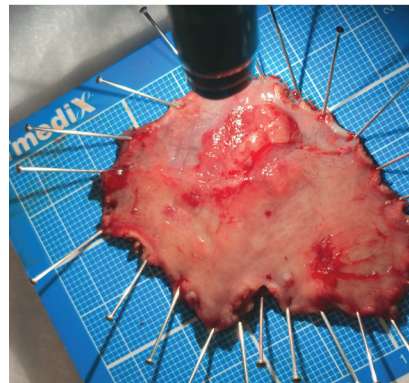
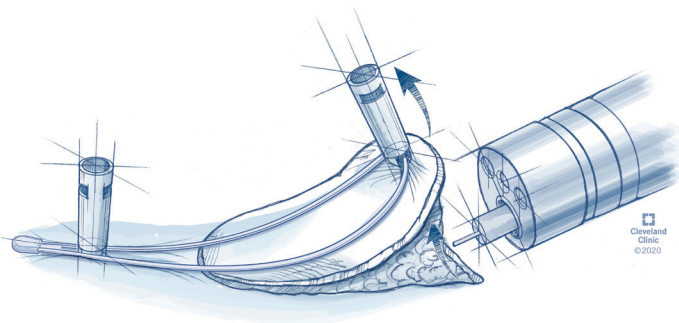
## Who Should Attend?

This course is designed for healthcare providers who express interest in Endoscopic Dissection and Endoscopic Resection including gastroenterologists, general surgeons, advanced endoscopists, colorectal surgeons, trainees, nurses, and technicians. This activity strives to produce significant knowledge gains that will, in turn, have positive effects on improving the quality of care for patients. This course also helps provide physicians with a different organ sparing option to prolong patient life.

## Learning Objectives

After completing this educational activity, the participant will be able to do the following:

- Demonstrate different tissue resection techniques such as ESD and EMR techniques.
- Identify new technology for ESD and retraction devices.
- Demonstrate how to utilize Endorobotics for resection and suturing.
- Demonstrate how to complete Post ESD management including defect closure and defect sealing.
- Demonstrate proper specimen handling once biopsies are taken from the ESD site.
- Demonstrate proper complication management and follow up care.



## Faculty

### Co-Activity Directors



**Amit Bhatt, MD**

Director of Endoscopic Submucosal Dissection  
Co-Director of the Endoluminal Surgery Center,  
Advanced Endoscopy Group  
Digestive Disease Institute  
Cleveland Clinic  
Clinical Assistant Professor  
Cleveland Clinic Lerner College of Medicine



**Emre Gorgun, MD, MBA**

Vice Chair, Department of Colorectal Surgery  
Krause-Lieberman Chair in Laparoscopic  
Colorectal Surgery  
Co-Director of the Endoluminal Surgery  
Center, Lower GI  
Digestive Disease Institute, Cleveland Clinic  
Clinical Assistant Professor,  
Department of Surgery  
Cleveland Clinic Lerner College of Medicine

---

### Guest Faculty

**Seiichiro Abe, MD, PhD**

National Cancer Center Hospital,  
Toyko, Japan

**Hiroyuki Aihara, MD, PhD**

Brigham & Women's Hospital

**Amitabh Chak, MD**

University Hospitals of Cleveland

**Austin Chiang, MD, MPH**

CMO, Medtronic

**Nayantara Coelho-Prabhu, MD**

Mayo Clinic

**Jennifer Hrabe, MD**

University of Iowa Hospitals & Clinics

**Sang Lee, MD**

Keck Medicine of USC

**Jun Chul Park, MD, PhD**

Yonsei University College of Medicine,  
Seoul, South Korea

**Yutaka Saito, MD, PhD**

National Cancer Center Hospital,  
Toyko, Japan

**Andrew Wang, MD**

University of Virginia

### Cleveland Clinic Faculty

**Anuradha Bhama, MD**

**Brogan Catalano, MHA, BSN, RN**

**Prableen Chahal, MD**

**Kyungran Justina Cho, MD, PhD**

**Suneel Kamath, MD**

**Siva Raja, MD, PhD**

**Roberto Simons-Linares, MD**

**Madhu Sanaka, MD**

**Joshua Sommovilla, MD**

**Monisha Sudarshan, MD**

**John Vargo, MD, MBA, MPH**

## Agenda

### DAY 1

#### Monday, November 11, 2024

7:15 am **Registration, Continental Breakfast, and Exhibits**

7:45 am **Welcome and Introductions**  
Amit Bhatt, MD and  
Emre Gorgun, MD, MBA

8:00 am **Indications for and Evaluation Prior to Upper GI ESD**  
John Vargo, MD, MBA,  
MPH

8:30 am **Techniques for Upper GI ESD**  
Seiichiro Abe, MD

9:00 am **Indications for and Evaluation Prior to Lower GI ESD**  
Andrew Wang, MD

9:30 am **Techniques for Lower GI ESD**  
Yutaka Saito, MD

10:00 am **Break/Exhibits**

10:30 am **Collaboration between Surgery and Gastroenterology for Endoluminal Surgery**  
Jennifer Hrabe, MD

10:50 am **Post ESD Management – To Close or Not to Close**  
Nayantara Coelho-Prabhu, MD

11:10 am **Future of Endoscopic Resection Innovations: Perspective from Industry**  
Austin Chiang, MD

11:30 am **Endorobotics: Future of Endoscopy or a Pipe Dream? A Surgeon's Perspective**  
Sang Lee, MD

11:50 am **Endorobotics: Gastroenterologist's Experience**  
Hiroyuki Aihara, MD

12:10 pm **Extending the Indications of ESD – Adjuvant Therapy after ESD: An Oncologist's Perspective**  
Suneel Kamath, MD

12:30 pm **Building an ELS Center and How to Design a Business Plan: Leadership Perspective**  
Brogan Catalano, MHA, RN

12:50 pm **Q&A / Working Lunch**

1:20 pm **Walk to Lab**

1:30 pm **Hands-On Lab**  
All Faculty

5:00 pm **Monday Adjourn**

### DAY 2

#### Tuesday, November 12, 2024

7:00 am **Continental Breakfast and Exhibits**

7:30 am **ESD Video Case Review Session**

- Live ESD Case Video Transmission from Korea (subject to change)
- Review and commentary from panels for upper and lower ESD
- Colon ESD
- Esophageal ESD

All Faculty

10:30 am **Hands-On Lab**  
All Faculty

3:00 pm **Adjourn**

## General Information

### Meeting Location

Cleveland Clinic Main Campus N Building (NA5-08)

9620 Carnegie Avenue, Cleveland, OH 44195

*(Lab will be held at Cleveland Clinic Surgical Skills Training Laboratory, L1-300)*

### Lodging

#### ON CAMPUS

InterContinental Hotel & Conference Center

216.707.4100

InterContinental Suites Hotel

216.707.4300

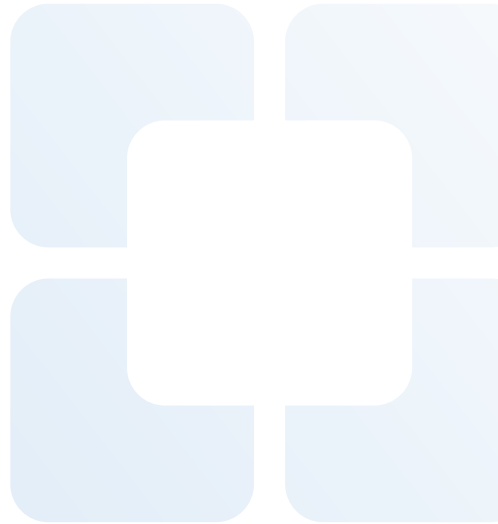
#### NEAR CAMPUS

DoubleTree Tudor Arms

216.445.1260

Courtyard by Marriott University Circle

216.791.5678



### REGISTER ONLINE at [ccfcme.org/ESDE2024](https://ccfcme.org/ESDE2024)

*Fee includes:* Continental breakfast, lunch, syllabus, and Faculty PowerPoint presentations in pdf format, post-course.

Category	Fee ON or BEFORE October 1, 2024	Fee AFTER October 1, 2024
Physician	\$695	\$795
Resident/Fellow	\$495	\$595
Non-Physician	\$495	\$595

### Registration and Cancellation

Preregistrations are accepted online until November 4, 2024. Slots are limited so we cannot accommodate walk-ins. In case of cancellation, a full refund will be made if canceled by October 1, 2024. Written notification of cancellation is required in order to process your refund. NO REFUNDS WILL BE ISSUED AFTER October 1, 2024.

For further information about this activity, contact Jennifer DiPiero, Administrative Program Coordinator, at [dipierj@ccf.org](mailto:dipierj@ccf.org).

Website: [ccfcme.org/ESDE2024](https://ccfcme.org/ESDE2024)