



Introduction to Cranial Radiosurgery

Cleveland Clinic Gamma Knife Center

Cleveland, OH



2025 In-Person Course Dates

April 9-11

June 4-6

August 20-22

October 29-31

December 3-5



To register to attend, contact Liz Eaton:

eatonl3@ccf.org or 216-445-5431



Learning Objectives

1. Identify the basic principles and biophysics of radiosurgery and how they apply to day-to-day patient treatment.
2. Review the clinical indications, parameters of treatment, and outcomes of radiosurgery.
3. Recognize radiation safety issues and principles, as well as become familiar with the emergency procedures as they pertain to radiosurgery.
4. Apply the principles of stereotactic frame application, imaging, and use of radiosurgery treatment hardware.

Course Location

The radiosurgery course is held in the Cleveland Clinic Gamma Knife Center located in the Taussig Cancer Center, Room CA-LL-63.

Course Description

Introductory Course

This education experience provides an opportunity to expand the practitioner's range of treatment options to include this precise form of stereotactic radiosurgery. The course will provide hands-on sessions with experts experienced in radiosurgery. At the conclusion of the week, participants will receive a certificate of course attendance.

Introductory Course Target Audience

Neurosurgeons, medical physicists, radiation oncologists, neurotologyngol-ists, dosimetrists, and radiation therapists who have little or no experience with radiosurgery.





Accreditation

In support of improving patient care, Cleveland Clinic Center for Continuing Education is jointly accredited by the Accreditation Council for Continuing Medical Education (ACCME), the Accreditation Council for Pharmacy Education (ACPE), and the American Nurses Credentialing Center (ANCC), to provide continuing education for the healthcare team.

CREDIT DESIGNATION

- **American Medical Association (AMA)**

Cleveland Clinic Center for Continuing Education designates this live activity for a maximum of 22.75 *AMA PRA Category 1 Credits™*. Physicians should claim only the credit commensurate with the extent of their participation in the activity.

Participants claiming CME credit from this activity may submit the credit hours to the American Osteopathic Association for Category 2 credit.

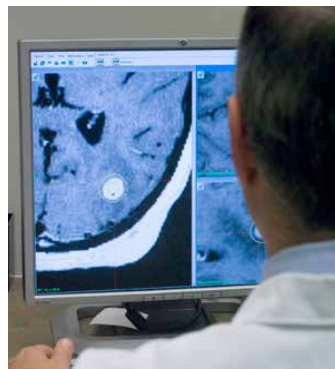
- **Certificate of Participation**

A certificate of participation will be provided to other health care professionals for requesting credits in accordance with their professional boards and/or associations.

- **American Board of Surgery (ABS) Maintenance of Certification (MOC)**

Successful completion of this CME activity enables the learner to earn credit toward the CME requirements of the American Board of Surgery's Continuous Certification program. It is the CME activity provider's responsibility to submit learner completion information to ACCME for the purpose of granting ABS credit.

- Credit will be reported within 30 days of claiming credit.



Program Directors

Gene H. Barnett, MD (Primary Director)

Director, Gamma Knife Center

Professor and Director, Cleveland Clinic Rose Ella Burkhardt Brain Tumor and Neuro-Oncology Center

Lilyana Angelov, MD

Head, Cleveland Clinic Section of Spinal Radiosurgery

Program Co-Director, Gamma Knife Center

John Suh, MD

Chairman, Department of Radiation Oncology

Program Co-Director, Gamma Knife Center

Faculty Disclosure Statement

The Cleveland Clinic Center for Continuing Education has implemented a policy to comply with the current Accreditation Council for Continuing Medical Education Standards for Integrity and Independence requiring mitigation of all faculty conflicts of interest. Faculty declaring a relevant financial relationship will be identified in the activity syllabus.

Agenda Sample



Wednesday

8:00 AM	Welcome and Introductions
8:15 AM	Lecture Review
9:00 AM	Hands-On Workflow
10:00 AM	Emergency Procedures
11:00 AM	Treatment Planning
12:00 PM	Lunch
12:30 PM	Lecture Review
1:30 PM	Treatment Planning
2:30 PM	Lecture Review
3:30 PM	Treatment Planning
5:00 PM	Adjourn

Thursday

7:30 AM	Quality Assurance Check
8:15 AM	Advanced Topics
8:45 AM	Hands-On Treatment Planning
10:15 AM	Lecture Review
11:00 AM	Treatment Planning
12:30 PM	Lunch
1:00 PM	Final Lecture Review (Jeopardy)
2:30 PM	Treatment Planning
4:15 PM	Adjourn

Friday

7:30 AM	Commissioning & Related Physics Topics
8:00 AM	Billing
8:30 AM	Lecture Review
9:15 AM	Team Planning
12:15 PM	Lunch & Course Review
1:15 PM	Wrap-up and Q&A
1:30 PM	Adjourn

Time will be allotted for Questions and Answers throughout the course.

Introduction to Cranial Radiosurgery

Cleveland Clinic Gamma Knife Center Cleveland, Ohio

To register contact Liz Eaton at
eatonl3@ccf.org or 216-445-5431

In-Person Course Dates

April 9-11

June 4-6

August 20-22

October 29-31

December 3-5

Tuition

Introductory Courses (3 days)

\$4,500 - Physicians, Surgeons, Physicists

\$2,250* - Residents and Fellows

(Includes course syllabus, breakfast & lunch each day, and two dinners.)

* Letter required from program director

Attendance at this radiosurgery course does not imply or confirm competency to perform stereotactic radiosurgery. A certificate of attendance will be awarded to those who participate in ALL of the lectures and hands-on practice.

This course does NOT provide training on older radiosurgery units.

Cleveland Clinic Center for Continuing Education reserves the right to cancel, postpone or modify an activity type at our sole discretion. In the event that this occurs, any registration fee(s) paid will be refunded. Be advised that Cleveland Clinic is not responsible for related costs including airline tickets, hotel costs, or any similar fee penalties incurred as a result of any Activity cancellations or changes.

Health & Safety Information

All applicable Centers for Disease Control (CDC), state, and local safety protocols will be enforced for this event. As participants are responsible for their own health choices, the use of masks by all participants at this event is optional.



Cancellation Policy Prior to the Course Commencement:

Up to 21 days, \$500; from 20-14 days, 25% of the fee.

Up to 13-7 days, 50% refund prior to commencement of the course.

No refunds less than 7 days but registration is transferable for the same session.

Minimum of five attendees required per course. We recommend that you **do not make travel arrangements** until you have received confirmation from the course manager that the course will be held. This is a separate confirmation from the confirmation you receive when registering online. In the event a course must be cancelled due to low enrollment, a full refund will be issued.

Payment: \$500 deposit is required at the time of registration.

Tuition must be paid in full prior to the start of the course.

Questions? Contact Martha Tobin by phone, 216-312-9101 or by e-mail at tobinm@ccf.org

Americans with Disabilities Act

The Cleveland Clinic Center for Continuing Education fully intends to comply with the legal requirements of the Americans with Disabilities Act. If you need assistance, please notify Martha Tobin at 216.444.3449 at least two weeks prior to the activity.